



Toronto Police Service Self-Service Crime Analysis with Operations Dashboards

Presented by: Debbie Verduga and Mark Jones
October 10, 2018





Business Intelligence & Analytics Unit (BIAU)

- **Support Senior Management Team in their strategic management of operations**
- **Provide vital information necessary to support operations and decision making through tools and resources for effective and timely analytical reporting of crime and traffic analysis**



Challenges

- **Manual / Duplication of work**
- **Unstandardized data processing methods**
- **Inefficiencies / inconsistencies**
- **Different levels of GIS Experience/Knowledge/Expertise**

ESRI's ArcGIS Suite of Tools



BI 360°

Spatial Platform



- **Regularly automated data updates**
- **Centralized platform for crime and traffic data analytics**
- **Standardized reporting across the organization**
- **Integration of web-mapping applications and operational dashboards**

BI 360° - PRODUCTS



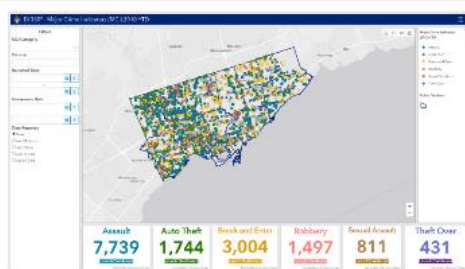
ALL

CRIME

TRAFFIC

COMMUNITY ASSETS

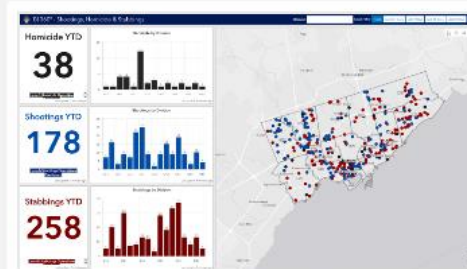
OPERATIONS DASHBOARDS



MCI 2018 YTD



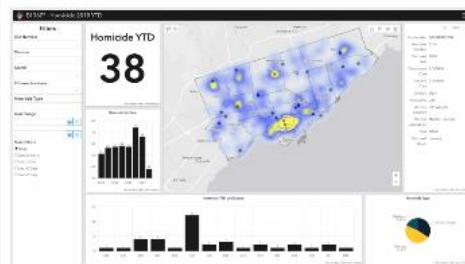
Fatal Traffic Collisions (Ops.Dash)



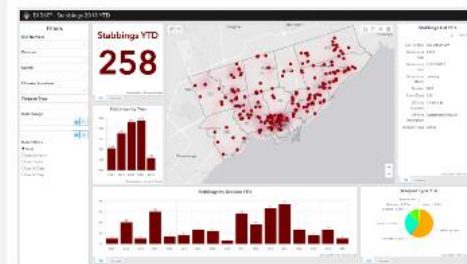
Shootings/Homicides/Stabbings



Shootings 2018 YTD



Homicides 2018 YTD



Stabbings 2018 YTD



Operations Dashboards



- Create dashboards on a web-browser
- Location-based data visualizations and analytics
- Customizable and interactive
- Real-Time Reporting/Common Operational Picture
- Securely share critical data on Portal for ArcGIS



Live Demo



Future of BI 360° Operations Dashboards

Crime Intelligence
Analysis



Tactical Crime
Analysis



Strategic Crime
Analysis



Real-Time Operational View



Questions



Contact us



Debbie Verduga

debbie.verduga@torontopolice.on.ca



Mark Jones

mark.jones@torontopolice.on.ca

© 2018 Esri Canada Limited. All rights reserved. Trademarks provided under license from Environmental Systems Research Institute, Inc. Other product and company names mentioned herein may be trademarks or registered trademarks of their respective owners. Errors and omissions excepted.

