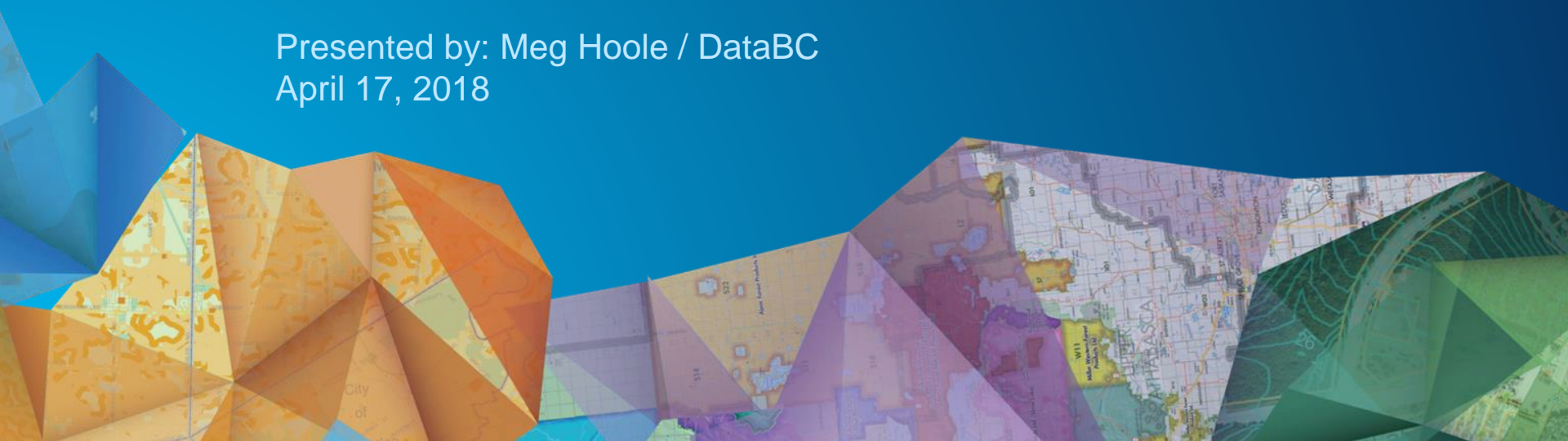


# BC's MapHub – Service Update and BC Wildfire Emergency Use-case

Presented by: Meg Hoole / DataBC  
April 17, 2018



# Overview

- About DataBC



- Service Update for B.C.'s Map Hub – Year 2

- Governance Structure - highlights
- Users, Training and Outreach

- BC Wildfire Emergency Use-case



# About DataBC



- DataBC is a branch of the Provincial Government enabling the strategic management and sharing of data across the government enterprise and with the public.
- It is responsible for the B.C. Data Catalogue, the Open Data initiative and the B.C. Spatial Data Infrastructure and associated products and services.
- Steward for the Province's instance of ArcGIS Online (cloud) - B.C.'s Map Hub

# B.C.'s Map Hub Governance Structure - Update

- Reporting Tools

- Automated monthly Community Content Reports –pdf & csv
  - (show trends, # of items, size of items, types of items, Access)
- Daily content audit – email

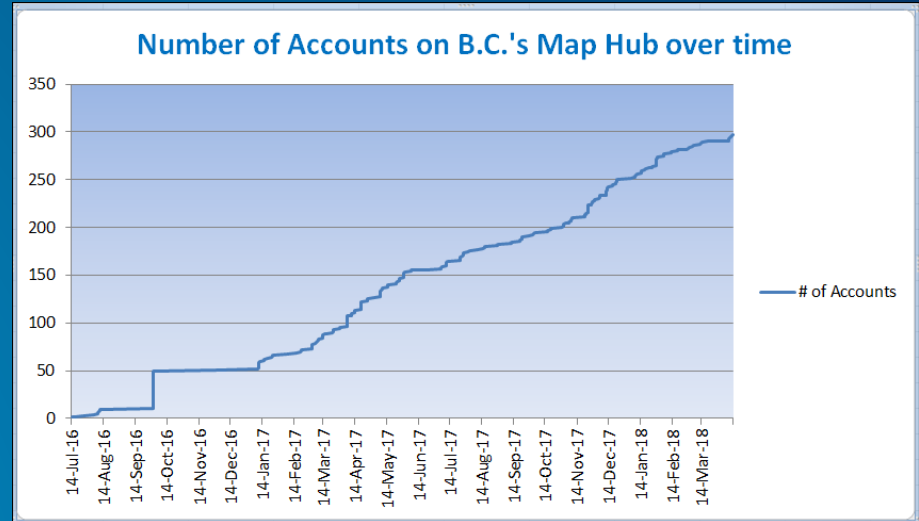
Subject	Received
ArcGIS Online - Content Audit - Status: OK	Thu 2018-04-12 11:00 PM
ArcGIS Online - Content Audit - Status: Critical	Tue 2018-04-10 11:00 PM
ArcGIS Online - Content Audit - Status: Critical	Mon 2018-04-09 11:01 PM

- Service Credit Management and Usage

- Over 700 public layers – reduce need to host data in AGO

# Users, Training and Outreach

- **Users - Growth is steady**
  - Users from 15 Ministries
  - 300 users (up > 200% since this time last year)
- **Training – 19 Webinars, Presentations and on-site training sessions delivered**
- **User Survey coming out this Spring**



# BC Wildfire Emergency Use-case



# What Happened?

- The 2017 wildfire season in BC was one of the worst on record
- More people than ever were looking for current wildfire information via the internet or cell networks
- We had an existing Wildfire app in place to provide the public with details for Active Wildfires
- The app started failing to meet demands – we needed to find a solution asap



# What Could We Do?



- **Enter ArcGIS Online...**
  - We had access to ArcGIS Online – B.C.'s Map Hub
  - We had ArcGIS Online expertise available
  - We could stand up a new Wildfire App in ArcGIS Online
- **Why?**
  - We could host the entire App including the Wildfire location data in the ArcGIS Online cloud
  - We could build the app quickly (no custom coding required)
  - Cost effective – low credit usage
  - AGO scales with demand

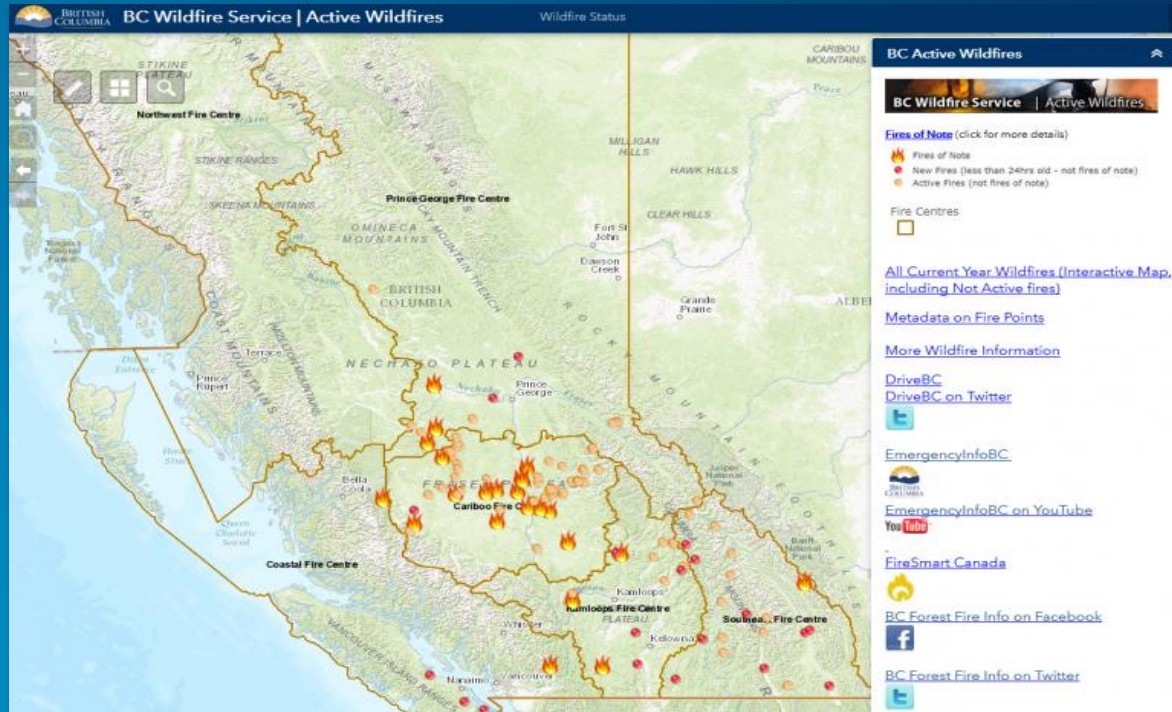


# Concerns?

- **Yes**
  - **BC Wildfire Service had no previous experience with ArcGIS Online. It was a new option for them.**
  - **Would ArcGIS Online be able to handle the traffic? Would it be stable?**
  - **How could we keep the wildfire data current when hosting it in ArcGIS Online?**

# What We Did

- Built a new wildfire app in B.C.'s Map Hub, and deployed it to the public on July 17, 2017.
- [BC Wildfire Service | Active Wildfires App](#)



# How Did We Do It?



- **Data → Web Map → Web App → Shared to Public**
- **The Data**
  - Published a hosted feature service to AGO.
  - Kept the wildfire location data current in AGO. How? FME.
  - Needed editable hosted feature layer (not shared to public)
  - Needed views (shared to public).
- **The App**
  - We chose to use the Web AppBuilder because it was best able to mirror the existing app's look, feel and functionality.
  - Uses responsive design that works well on mobile devices.

# Lessons Learned

- **Share Views to public (not the editable HFL)**
- **Append WAB URL parameters (zoom to x y coordinates)**
- **Making changes to a publicly accessible app can be challenging without a staging area**
- **The Traffic**
  - **The AGO app easily handled the traffic.**
    - **First day 68,535 views**
    - **2<sup>nd</sup> day 88,690 views (highest traffic day for the season)**
- **AGO performed very well when put to the test at a critical time.**



# Questions?

**DataBC:** <https://data.gov.bc.ca/>

**Contact:** [Meg.Hoole@gov.bc.ca](mailto:Meg.Hoole@gov.bc.ca)

**B.C.'s Map Hub:**

<https://governmentofbc.maps.arcgis.com/home/index.html>

**BC Wildfires | Active Wildfires App:**

<https://governmentofbc.maps.arcgis.com/apps/webappviewer/index.html?id=a1e7b1ecb1514974a9ca00bdbfffa3b1>

© 2015 Esri Canada Limited. All rights reserved. Trademarks provided under license from Environmental Systems Research Institute, Inc. Other product and company names mentioned herein may be trademarks or registered trademarks of their respective owners. Errors and omissions excepted.

