

# Moving Saskatchewan towards ArcGIS HUB

*Ken Yurach, Provincial Office of  
Geomatics Coordination (POGC)*

# Saskatchewan's enterprise GIS (eGIS)

- Enterprising of Saskatchewan's government GIS began in fall 2013
- Provincial Office of Geomatics Coordination (POGC) coordinated creation of a spatial data infrastructure (SDI) for Government of Saskatchewan
- Development of shared geomatics applications and licensing across government
- Developed a broad-based, inter-ministerial governance structure to promote data sharing and application interoperability

# Saskatchewan's enterprise GIS (eGIS)

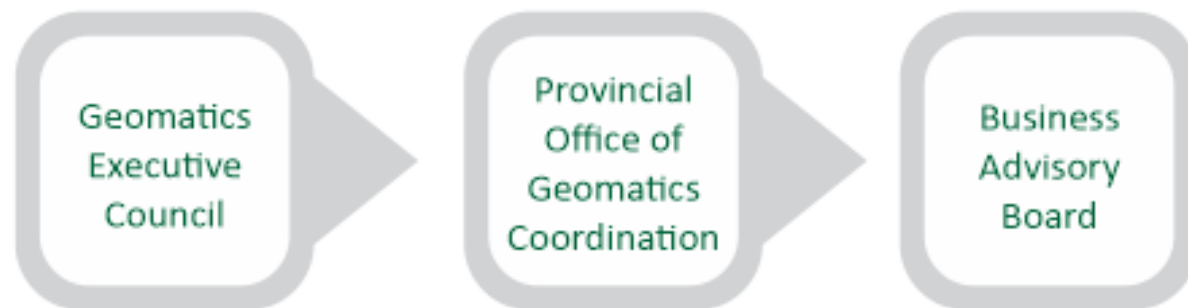
- Provided a common set of operating procedures and leverage established geospatial standards
- Provided a common integrated platform for application development and integration.

# What is the governance structure?

## Strategic Mandate

The Provincial Office of Geomatics Coordination implements the Geomatics Executive Council mandate. They collaborate across government to promote and administer enterprise spatial data and services for the Government of Saskatchewan.

## Geomatics Governance Structure



Co-operative Operational Working Team  
External Agencies  
Community of Interest

# What does our enterprise GIS provide?

Geomatics provides key building blocks to meet three main needs of government when serving citizens:



**Spatial systems of record** - where location is a core attribute.



**Systems of insight** - where spatial analysis provides strategic value in decision-making.



**Systems of engagement** - where communicating location is critical.

# Why move towards open data?

- Simplifies data sharing
- Makes data more discoverable
- Enables government transparency
- Leverages server technology
- Reduces stale/old data
- Grows a community of innovation
- Facilitates data sharing within an organization

# What are the benefits of ArcGIS HUB?

- Tools to create maps, apps, and dashboards
- Engagement platform to support collaboration
- Ways to capture, store and share data
- Apps and tools (templates)

# Provincial GeoHUB development

- Began testing of Esri Open Data Platform spring 2018 and ArcGIS HUB in the spring of 2019
- Established online governance and applications across government.
- Developed a broad-based intra-ministry governance structure to promote data sharing and application interoperability between ministries
- POGC adjusted spatial data infrastructure (SDI) for Government of Saskatchewan in 2019 to enable ability to share spatial data and solutions through portal.

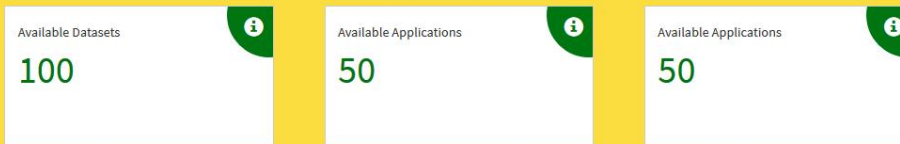


# Updating the platform to new solution



Government of Saskatchewan Policy on Distribution of Digital Geospatial Information directs the distribution of government spatial data to both government and the public. It specifically seeks to: maximize the exchange and usage of the data collected by government; benefit all sectors of the province generally; stimulate technological innovation in geomatics; and help to foster increased business activity and economic development.

## Did you know?

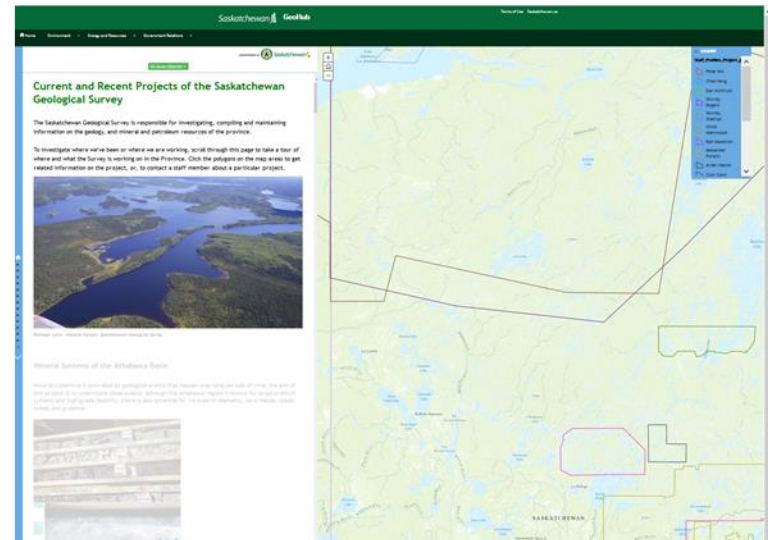
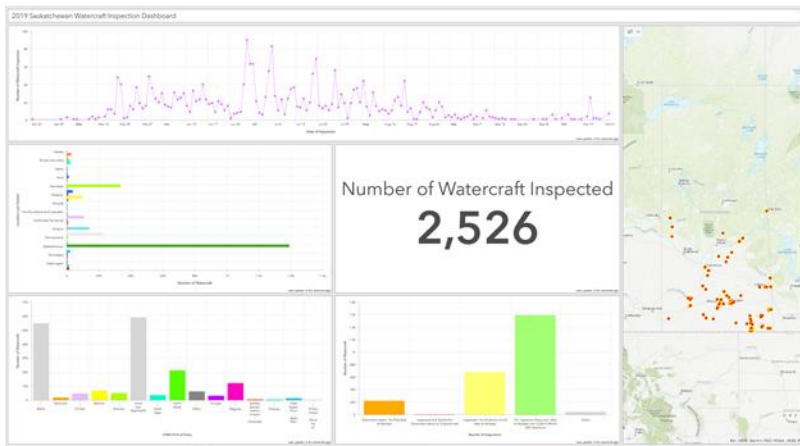
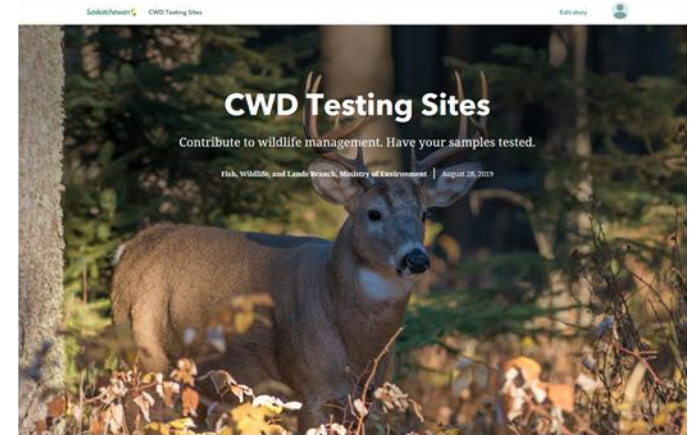
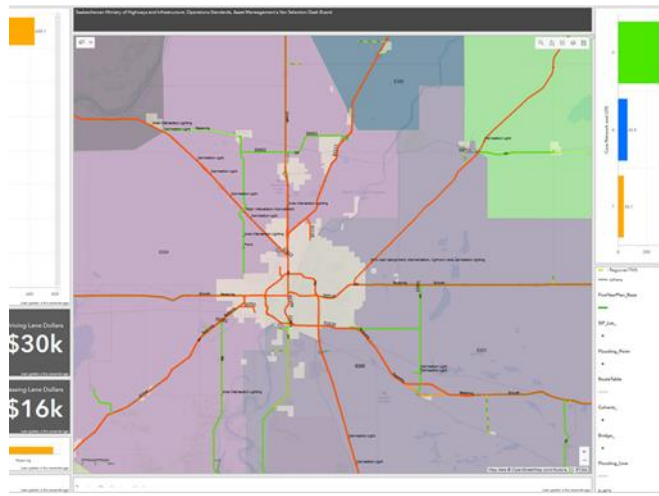


# Updating the platform to new solution

- Inform users and improve access to solutions
- Easier searches for spatial content
- Increased ability to access government data
- Enabling search spatial content by themes

# Why are we doing this?

- To enable solutions to monitor critical issues within the province
- To improve access to spatial analytics tools that use government data
- To help government and external agencies see spatial relationships through data analytics and visualization
- To building inter-agency partnerships to share data to promote smarter solutions and decisions



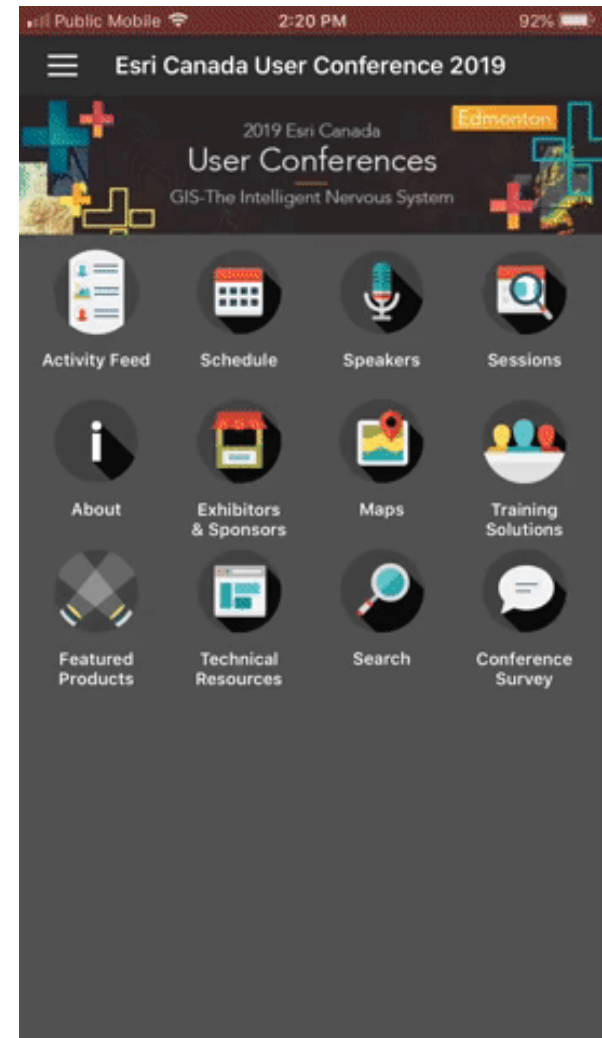
## Dashboards and Story Maps

# **To build inter-agency partnerships to share data to promote smarter solutions and decisions**

- Working with agencies to access spatial data and services
- Building Collaboration Platform for all levels of Government
- Enabling users to access current content from government

# Questions?

# Session Rating



[saskatchewan.ca](http://saskatchewan.ca)