

# Comparing ArcMap Assistant Attribute Workflows to ArcGIS Pro Attribute Rules

**A workflow comparison**

Julie Roebotham  
Strategic Advisor

&

Lauren Wilson  
Technical Solution Specialist

## Overview:

- Attribute Assistant functionality exists in ArcMap
- Attribute Rules introduced in ArcGIS Pro in version 2.1

If you have delayed migration to ArcGIS Pro because of Attribute Assistant well....



## Outcome

Hopefully an answer to these questions:

**Are my commonly used attribute assistant workflows available in ArcGIS Pro?**

**And if yes... Does that mean I can move to ArcGIS Pro?**



# Attribute Assistant

## ArcMap

# Attribute Assistant

## Attribute Assistant

- ✓ Easy to install
- ✓ Configured via tables
- ✓ Triggers
- ✓ Run Weights
- ✓ Support for FGDB & EGDB
- ✓ Attribute Assistant Methods

# Typical ArcMap Setup for Attribute Assistant Tool

**Manual Triggers**

**Config tables in map**

**Contents of DynamicValue tell the tool what to do**

**Trigger Attributes & Rule Weight**

OBJECTID *	Table Name	Field Name	Value Method	Value Info	On Create	On Change (Attrib)	On Change (Geo)	Manual Only	Rule Weight	Cor
176	BLD_building_symbol	BL_ID	GENERATE_ID	BLID BL[SEQ]True	True	False	False	False	3	Update building ID
177	BLD_building_symbol	SYMB_ID	GENERATE_ID	SYMBID SY[SEQ]True	True	False	False	False	3	Update Symbol ID
178	BLD_building_symbol	Label	PROMPT	<Null>	True	True	False	False	4	Prompt for null label
179	BLD_building_symbol	Label	EXPRESSION	TCase([Label])	True	True	False	False	3	Change entered lab
180	BLD_building_symbol	BLPOLY_ID	INTERSECTING_FEATURE	Building BLPOLY_ID False	True	False	True	False	3	Pull building outline l
181	BLD_building_symbol	BYLAW_ID	NEAREST_FEATURE_ATTRI	Bylaw_Areas BYLAW_ID, BYLA	True	False	True	False	3	Pull bylaw info from
182	BLD_building_symbol		CREATE_LINKED_RECORD	Building_Details BUILDING_USE_N	True	False	False	False	2	Update Building Nar
183	Street_Network	STR_NAME,STR_TY	PROMPT	<Null>	True	True	False	False	1	Prom,pt for street n
186	Street_Network	STR_NAME	EXPRESSION	IIF(isNull([STR_NAME]),[STR_NAM	True	True	False	False	<Null>	<Null>
188	Street_Network	FULL_NAME	EXPRESSION	[STR_NAME]&" "& [STR_TYPE]	True	True	False	False	<Null>	<Null>
189	BLD_building_symbol	ADDRESS	GET_ADDRESS_FROM_CEN	Street_Network STR_NAME,TO_L	True	False	False	False	<Null>	<Null>

## So what are the 'Common' Methods

This list comes from what we've seen our clients use most commonly

**NOT an 'Official' list!**

- ❖ **GenerateID**
- ❖ **Prompt**
- ❖ **Expression**
- ❖ **Intersecting Feature**
- ❖ **Nearest Feature**
- ❖ **Get Address from Centerline**

**Timestamp and Current User are EXTREMELY common but not covered here since this functionality exists with Editor Tracking**

## Two Workflows:

- **Building Editing Workflow:**

- Prompt
- Generate ID
- Nearest Feature
- Intersecting Feature
- Get address from centerline

- **Street Centerline Editing Workflow:**

- Expression
  - IIF, isNull, Ucase
  - Concatenation



# DEMO

**Attribute Assistant Workflows  
in ArcMap**



# Attribute Rules

ArcGIS Pro

# Attribute Assistant | Attribute Rules

Attribute Assistant (ArcMap)	Attribute Rules (ArcGIS Pro)
✓ Easy to install	✓ No Install
✓ Configured via tables	✓ Configured via GP Tool
✓ Triggers	✓ Triggers
✓ Run Weights	✓ No Run Weights
✓ Support for FGDB & EGDB	✓ Support FGDB & EGDB
✓ Attribute Assistant Methods	✓ Freedom of Arcade
	✓ Global ID
	✓ Tasks, GP tools, Feature Templates

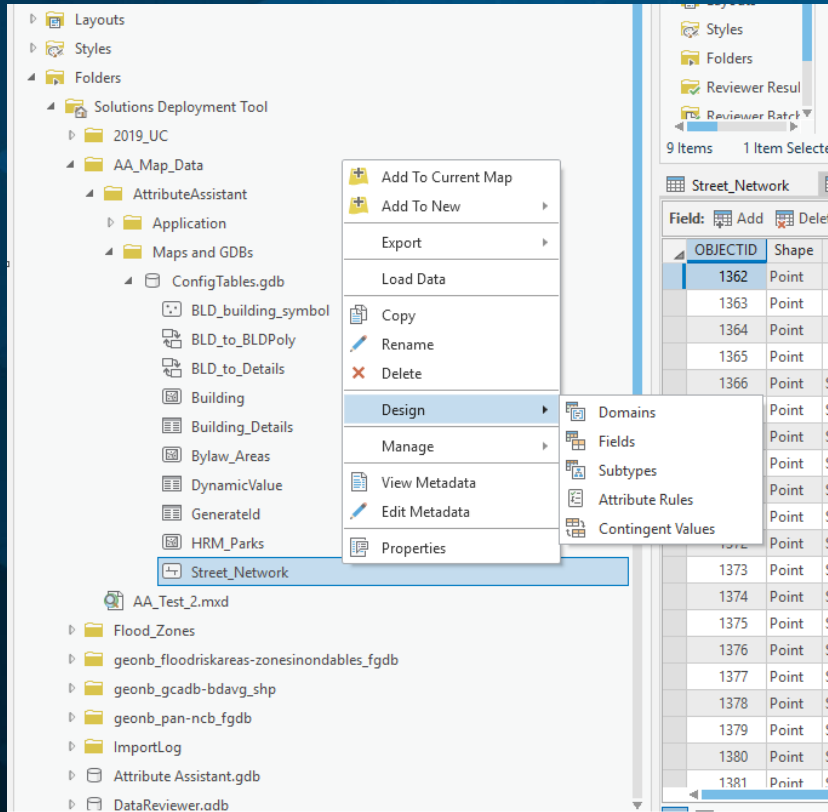
# Attribute Rules

- **Calculation Rule**
  - Automatically populate attributes based on editing pattern.
- **Constraint Rule**
  - Used to control the entry of data by user-defined requirements
- **Validation Rule**
  - Highlight errors in existing data, and can only be used in Enterprise Geodatabase

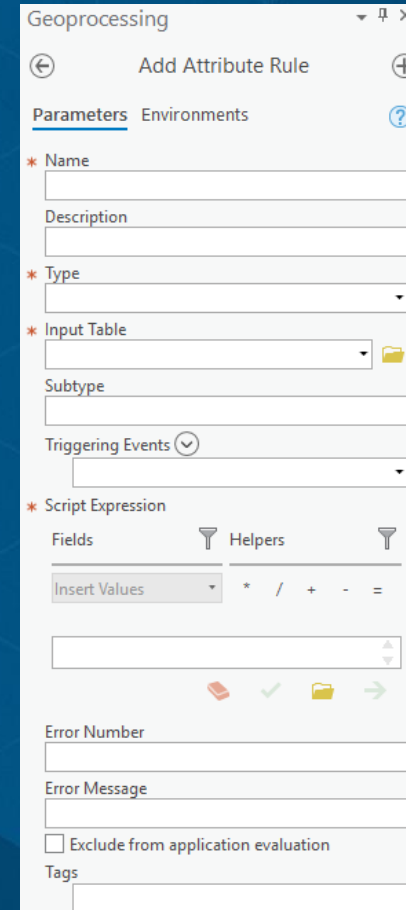


# Create an Attribute Rule

## Attribute View

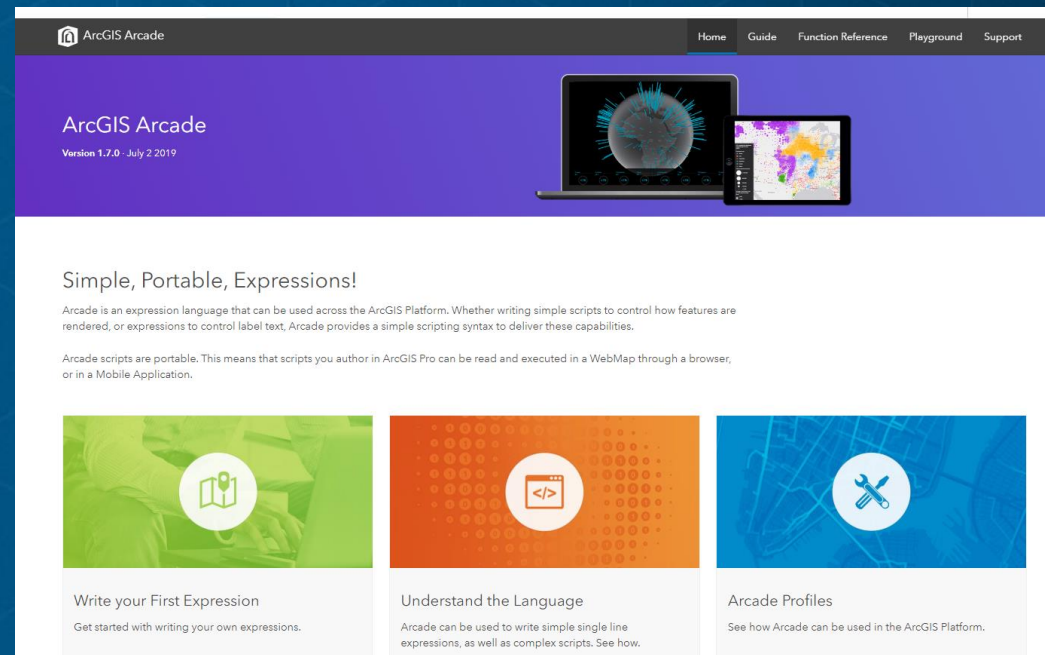


## Add Attribute Rule Tool



# Attribute Rule Expressions

- **Arcade** is a portable expression language that can be used across the ArcGIS Platform.
- Plenty of online resources and examples!!
- Esri Academy training available to help you get started!
- Online sandbox to test your expressions!

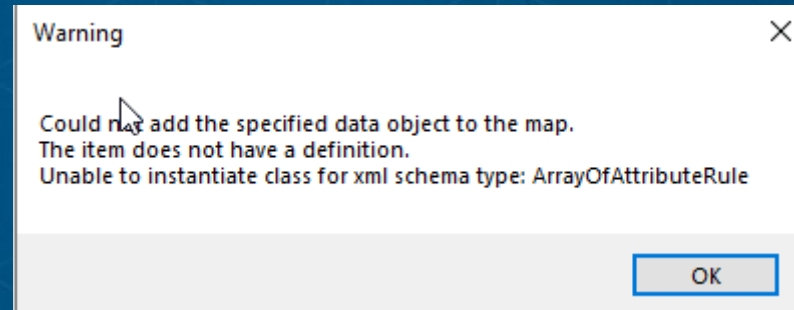


# DEMO

**Attribute Rules Workflow in  
ArcGIS Pro**

## Attribute Rules – Additional Considerations

- Once Attribute Rules have been configured on a dataset, it can no longer be opened in ArcMap



- Can share Attribute Rules between Pro users but no automated way to import Attribute Assistant Dynamic Value table to ArcGIS Pro
- Validation and Batch Calculation rules are configured on datasets in an **enterprise geodatabase**.



# Questions?

*Don't forget to rate the session using the Esri Canada  
Event App!*

# Session Rating

