

# GIS Initiatives

## Toronto Catholic District School Board

Jonathan Howley  
Spencer Comfort  
Bunmi Kusimo  
Khasim Martin

# Outline

---

- **Interactive School Information Profile**
- **Demographic Trending and Tracking**
- **Development Tracking**
- **School Space Assessment**
- **Future Projects**
- **Q & A**



# School Information Profile

Profile Sheets

2007

Created using Microsoft Word



**St. Norbert Catholic School**  
60 Maniza Road, Toronto

**School Program:** Junior Kindergarten – Grade 8  
**Other programs:** Italian  
**EDC Review Area:** CE08  
**Superintendent:** Michael McMorrow  
**Trustee Ward:** 4  
**City Ward:** 9



Ortho Site Plan (2005 Image)



Assessment Parcel Map (2002 Image)

**Site Size:** 3.86 acres  
**Gross Floor Area:** 1841 m<sup>2</sup>  
**Year Built:** 1965  
**Facility Condition Index:** 44.28% by OTG      47.60% by GFA

**Deferred Maintenance (2002-2007):** \$1,352,780.00

**Transportation:** Regular Home-to-School; Kindergarten; Special Needs

**Enrolment Data (March 23, 2007):**

Current Data	Student Capacity	Portables on Site	Historical Enrolment	2000-2001	2001-2002	2002-2003	2003-2004	2004-2005	2005-2006
	196	6		349	367	378	335	317	311

Projected Enrolment	2007-2008	2008-2009	2009-2010	2010-2011	2011-2012	2012-2013	2013-2014	2014-2015	2015-2016	2016-2017	2017-2018	2018-2019	2019-2020
	294	279	259	232	216	201	177	172	165	168	177	189	213

For more school information, visit this Website:  
<http://www.tcdsb.org/schools/stnorbert.asp>

# 2013

Created using Microsoft Excel

## St. Norbert Catholic School

60 Maniza Rd, Toronto

Trustee Ward: Ward 04 - Patrizia Bottoni  
 Superintendent Area: Area 3 - Gina Iuliano-Marrello  
 SQS Area: Area 3 - Sam Talarico  
 EDC Review Area: CE09  
 City Ward: York Centre (9)

### School Programs

School Program: JK – Grade 8  
 Full Day Kindergarten (FDK): Year 2, 2011-12  
 French Immersion Program: No  
 Other Programs: Italian  
 Child Care Program: No  
 Before and After Program: No  
 Transportation: Regular Home-to-School; Kindergarten; Special Needs  
 Eco School Certification: n/a  
 Best Start Program: No

### Facility Characteristics

Number of Stories: 2  
 Site Size: 0.72 Hectares 1.78 Acres  
 Gross Floor Area: 2,391 SQ Metres 25,727 SQ Feet  
 Year Built: 1965  
 Additions: Addition 1 Addition 2 Addition 3 Addition 4  
 2011 0 0 0  
 Playground Equipment: No

### Facility Condition Index (FCI)

Last EDU Inspection<sup>1</sup>: 2013  
 EDU Comparable FCI<sup>2</sup>: 28.61 5-Year Renewal Needs Range: 2013-2017

1) The Ministry is conducting condition assessments of all schools. The inspections began in 2011 and facilities will be assessed over a five-year period. The Ministry last conducted condition assessments in 2002-03.  
 2) Based on condition assessment findings, the Ministry of Education calculates five-year renewal needs and replacement value to determine the Facility Condition Index (FCI).

### Current Enrolment & Utilization Rate

Oct 31 Enrolment <sup>3</sup>	OTG Capacity <sup>4</sup>	Current Utilization	Portables
321	302	106.3%	2

3) Based on Pupil Count (all JK/SK at 1.0) Trillium Extract, October 31, 2013  
 4) OTG is based on 2013-14 capacities

### Historical Enrolment

	Historical October Pupil Count (All JK/SK at 1.0)					Historical OnSIS Approved Average Daily Enrolment (ADE)				
	2008-09	2009-10	2010-11	2011-12	2012-13	2008-09	2009-10	2010-11	2011-12	2012-13
Historical Enrolment	295	298	319	339	329	265	270	291	308	290
Utilization Rate	97.7%	98.7%	105.6%	112.3%	108.9%	87.8%	89.3%	96.2%	102.0%	96.1%

### Projected Enrolment

	2014-15 <sup>5</sup>	2015-16	2016-17	2017-18	2018-19	2019-20	2020-21	2021-22	2022-23	2023-24	2024-25	2025-26	2026-27	2027-28
Projected October Pupil Count	333	342	351	352	349	341	339	334	322	320	319	317	316	314
Utilization Rate	110.2%	113.3%	116.2%	116.5%	115.5%	112.7%	112.2%	110.6%	106.5%	106.0%	105.5%	105.0%	104.6%	104.1%

5) 2014-15 to 2015-16 are Board Approved Projections. 2016-17 to 2027-28 are updated Planning Projections and are subject to change.

For more information, please visit the School Website:  
<http://stnorbert.tcdsb.org>



Ortho Site Plan (2011 Image)



Assessment Parcel Map (2011 image)

# 2016

Created using Microsoft Access

## St. Norbert Catholic School

60 Maniza Rd  
M3K 1R6

Trustee Ward: Ward 04 - Patrizia Bottoni  
Superintendent Area: Area 3 - Michael Caccamo  
EDC Review Area: CE09  
City Ward: York Centre (9)

### School Programs

School Program:	JK – Grade 8	Best Start Program:	No
Child Care Program:	No	Accessibility Status:	Partial
Before and After Program:	No	BF Parking Space:	No
Transportation:	Regular Home-to-School; Kindergarten; Special Needs	Ramp Entry:	Yes
Eco School Certification:		Auto Door Opener:	No
Other Programs:	Italian	Elevator:	Yes
		BF Washroom:	No

### Facility Characteristics

Site Size:	See Map	Number of Stories:	2
Gross Floor Area:	2245.66	Year Built:	1965

### Facility Condition

Assessment Year<sup>1</sup>: 2013

EDU Comparable FCI (%)<sup>2</sup>: 25

- 1) The Ministry is conducting condition assessments of all schools. The inspections began in 2011 and facilities will be assessed over a five-year period. The Ministry last conducted condition assessments in 2002-03.
- 2) FCI is the building condition as determined by the Ministry of Education by calculating the ratio between the five-year renewal needs and the replacement value for each facility.

### Current Enrolment and Utilization Rate

October 31st Enrolment <sup>3</sup>	OTG Capacity <sup>4</sup>	Current Utilization	Portables
337	354	95.2%	2

3) Based on Pupil Count (all JK/SK at 1.0) Trillium Extract, October 31, 2015

4) OTG is based on 2015-2016 capacities

### Historical Enrolment

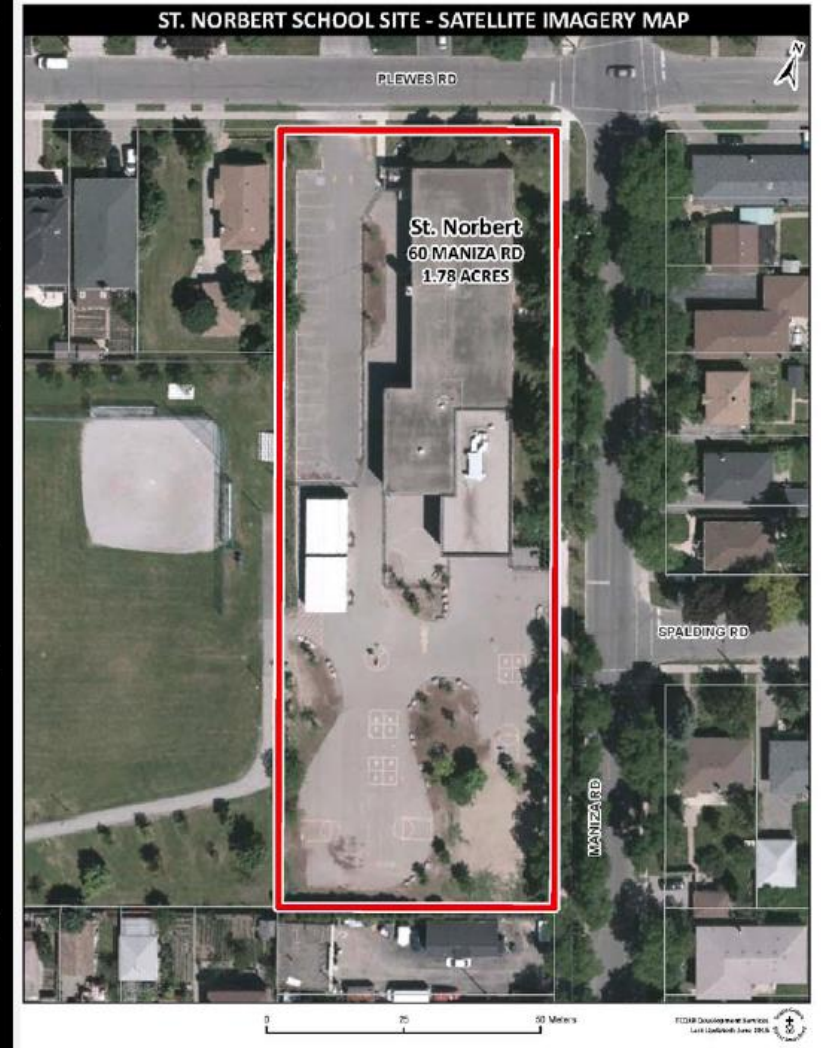
	Historical October Pupil Count (All JK/SK at 1.0)				
	2010-11	2011-12	2012-13	2013-14	2014-15
Enrolment	319.00	339.00	329.00	321.00	320
Utilization	90.1%	95.8%	92.9%	90.7%	90.1%

	Historical OnSIS Approved Average Daily Enrolment (ADE)				
	2010-11	2011-12	2012-13	2013-14	2014-15
Enrolment	290.50	308	290.25	283.25	320
Utilization	82.1%	87.0%	82.0%	80.0%	90.4%

### Projected Enrolment<sup>5</sup>

	2016-17	2017-18	2018-19	2019-20	2020-21	2025-26	2030-31
October Pupil Count	334.2	339.9	340	343.1	354.9	318.5	323.2
Utilization	94.4%	96.0%	96.0%	96.9%	100.3%	90.0%	91.3%

5) 2016-17 to 2018-19 are Board Approved Projections.



For more information, please visit the School Website:  
<http://stnorbert.tcdsb.org>

Last Updated: Sept 1st, 2016  
TCDSB Planning And Accountability

# Current

### School Profile Sheet


Toronto Catholic District School Board

Trustee Filter: No Filter | Spec. Ed. Programs: No Filter | School Panel Filter: No Filter | School Search: Immaculate Conception


**Immaculate Conception CS (E)**  
23 Comey Rd. M6M2K9, North York  
Special Programs: None  
Special Education Programs: Multiple Exceptionalities

#### School Details

School Code: 281  
SFIS Code: 10311  
Superintendent Area: 2  
Superintendent: Patrick Keyes  
Trustee Ward: 10  
Trustee: Daniel Di Giorgio  
Portables: 0  
Approx. Portable GFA: 0.00  
Before/After Program: Yes  
Child Care Program: Yes  
EDC Review Area: CE05  
Opening Date: 12/27/2004  
Year Built: 2004  
Approx. GFA: 5,117.00  
Assessment Year: 12/31/2013  
Renewal Cost (\$): 263,741.00  
FCI (%): 2.00



#### Current Utilization (%)



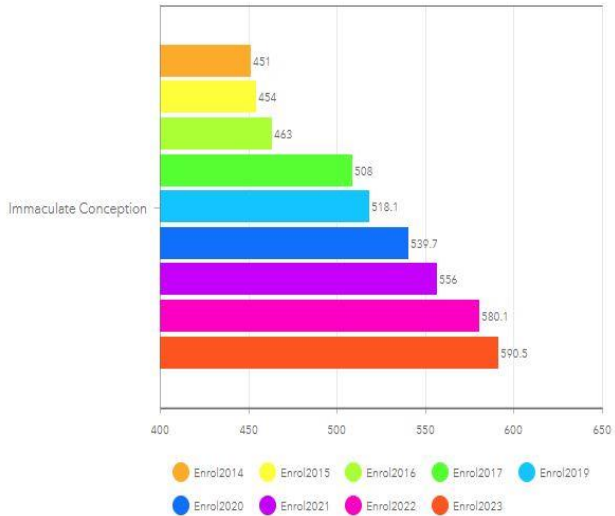
102.2

#### Current Enrolment / OTG Capacity

**521/510**

Based on Pupil Count (all JK/SK at 1.0) Trillium Extract: October 31st 2018  
OTG is based on 2018-2019 capacities

#### Historic and Projected Enrolment



Year	Enrolment
Enrol2014	451
Enrol2015	454
Enrol2016	463
Enrol2017	508
Enrol2019	518.1
Enrol2020	539.7
Enrol2021	556
Enrol2022	580.1
Enrol2023	590.5

2019, 2020 and 2021 are Board Approved Projections

Data Based on SFIS Extract: April 2nd, 2019

# Demographic Trends and Tracking

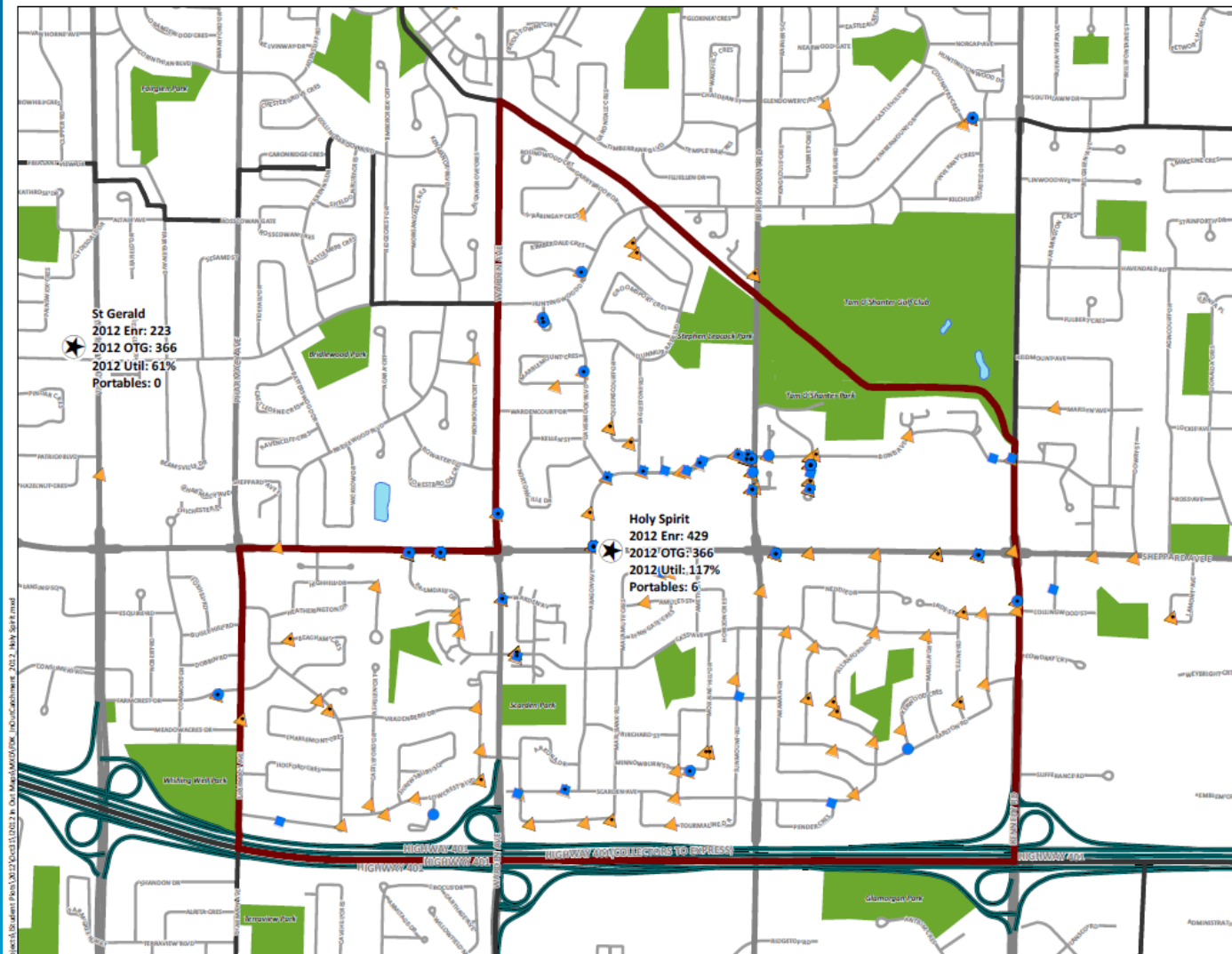
Student Boundary Analysis





# 2012

Created using Microsoft Excel

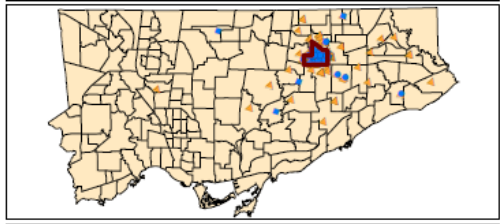


Prepared by: TCDSB Planning Services  
 Date: March 28, 2013

0 0.375 0.75 1.5 Kilometers

■ JK Students    ● Student with Sibling    ★ Early French (EF)    🏠 School Catchment  
 ● SK Students    ⬠ Elementary    ★ Extended French (EF)    🏠 FDK Catchments  
 ▲ Gr 1 to 8 Students    ● Secondary    ★ Extended & Early French

## Holy Spirit October 31, 2012 Enrolment (Within and Outside FDK Catchment)



### Holy Spirit Pupil Distribution - FDK: Year 5, 2014-15

CATCHMENT SUMMARY	In Catchment		Out of Catchment	
	#	%	#	%
JK	36	86%	6	14%
SK	28	85%	5	15%
Grade 1 to 8	291	82%	63	18%
<b>Total</b>	<b>355</b>	<b>83%</b>	<b>74</b>	<b>17%</b>

Holy Spirit Enr: 429

### OUT OF CATCHMENT SIBLING SUMMARY

	With Siblings		Without Siblings	
	#	%	#	%
Out of Catchment JKs	1	17%	5	83%
Out of Catchment SKs	3	60%	2	40%
Out of Catchment Total (JK - 8)	23	31%	51	69%

FDK Catchment	Total JKs	JKs with Sibling	Total SKs	SKs with Sibling	Total Gr. 1 to 8	Gr. 1 to 8 with sibling	Total Students	Total Students with Sibling
<b>Totals:</b>	<b>42</b>	<b>16</b>	<b>33</b>	<b>19</b>	<b>354</b>	<b>143</b>	<b>429</b>	<b>178</b>
Holy Spirit	36	15	28	16	291	124	355	155
St Aidan	1	0	1	1	18	5	20	6
St Bartholomew	1	0	0	0	6	2	7	2
St Gerald	0	0	1	1	5	2	6	3
St Lawrence	0	0	0	0	6	2	6	2
St Victor	0	0	2	0	3	0	5	0
STA	0	0	0	0	3	2	3	2
Prince of Peace	1	1	0	0	1	1	2	2
St Martin De Porres	0	0	1	1	1	1	2	2
St Henry	0	0	0	0	2	2	2	2
Other Catchments	3	0	0	0	18	2	21	2

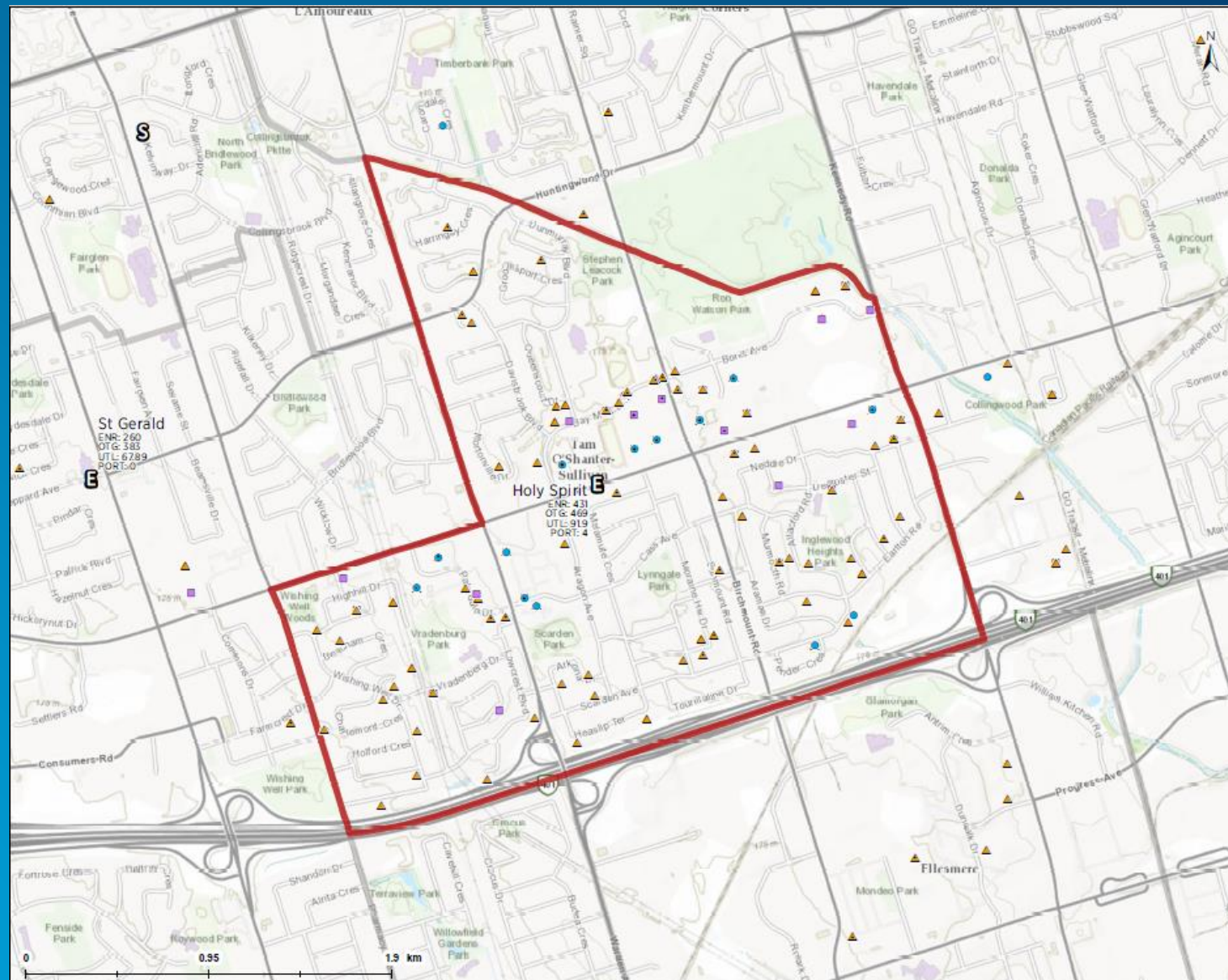
### HOLY SPIRIT: Board Approved Enrolment Projections

Year	OTG Capacity	Projected October Enrolment (Pupil Count)					
		Historical and Projected JK Students	SK Students	Grade 1 to 8 Students	Total Students		
2008	366	26%	36	28	295	309	
2009	366	105%	43	36	304	363	
2010	366	106%	37	38	313	368	
2011	366	115%	37	42	343	422	
<b>Oct. 31, 2012 (Trillium)</b>	<b>366</b>	<b>117%</b>	<b>42</b>	<b>33</b>	<b>354</b>	<b>429</b>	
Projected Enrolment: Board Approved	2013	398	104%	41	37	337	416
	2015	398	104%	41	37	338	416
Long Range Projections: Not approved by Board and are subject to change	2016	398	108%	42	38	349	429
	2021	398	108%	41	37	350	429
	2026	398	105%	40	37	342	419

Note(s):  
 1) Enrolment data extracted from Trillium, October 31, 2012. Data has not been approved by OnSis and may differ slightly from official counts produced in 2013.  
 2) OTG, utilization and portable data is current as of March 28, 2013 and is subject to change.

# 2016

Created using ArcMap 10.4



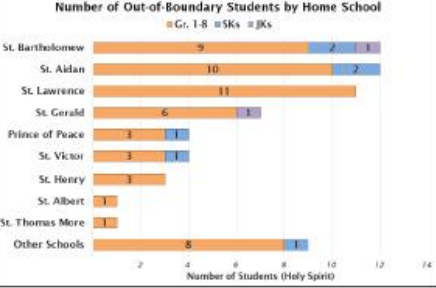
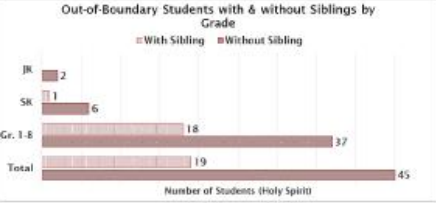
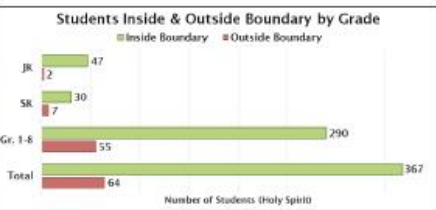
TCDSB Geospatial Centre  
 Date: 4/5/2017

Gr 1 - 8 Students   
 SK Students   
 JK Students   
 Student with Sibling

Elementary School   
 Secondary School   
 School FAB   
 Other FABs   
 FI Boundary

## Holy Spirit Inside or Outside Boundary Analysis October 31, 2016 Trillium Enrolment

Enrolment Summary (Holy Spirit)			
JK	SK	Gr 1-8	Total
49	37	345	431

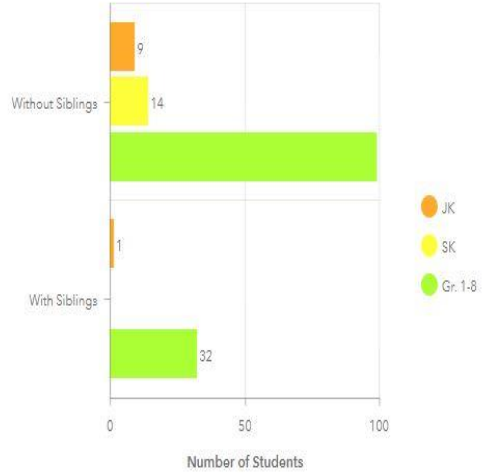


(Notes)  
 1) Enrolment data extracted from Trillium, October 31, 2016. Data has not been approved by CDSB and may differ slightly from official reports produced in 2017.  
 2) CDSB, if possible and portable data is correct as of December 6, 2016 and is subject to change.  
 3) Students with no home/previous address, no address or an address outside of the OSA entered in Trillium cannot be processed, as a result the students are omitted from the total enrollment analysis.  
 4) Where there is more than one student living at a residential address, there will be an overlap of students since there is only one address point that matches multiple student's home address.

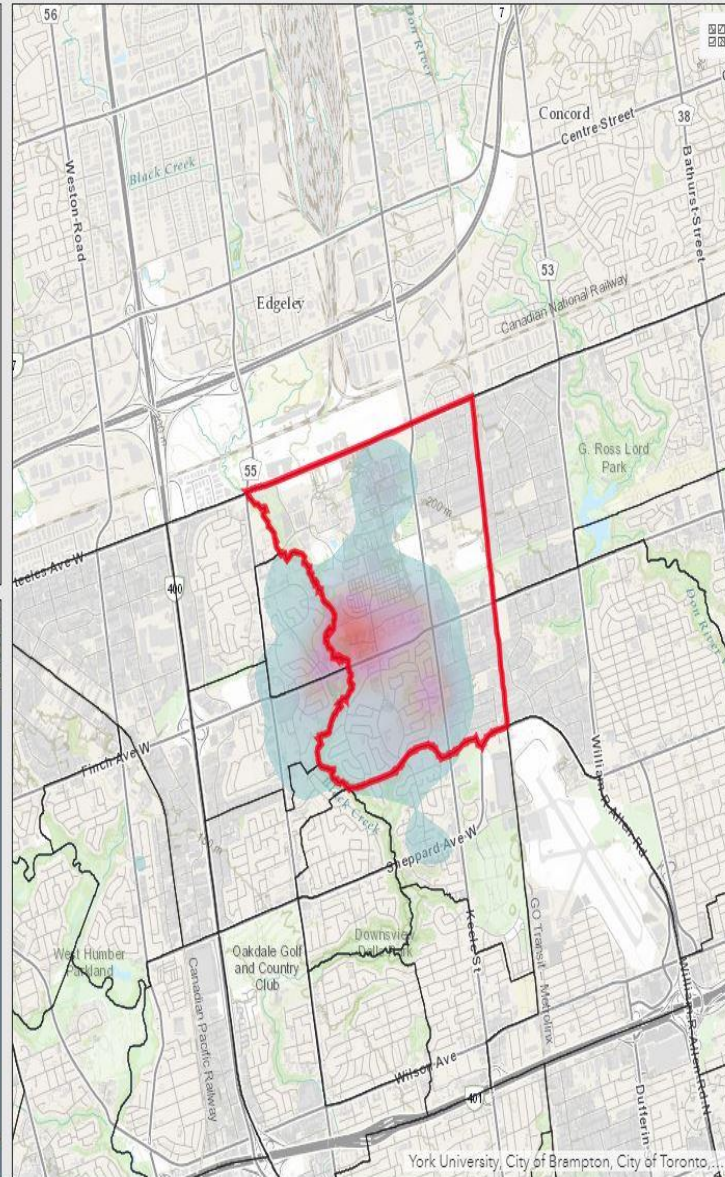


# Current

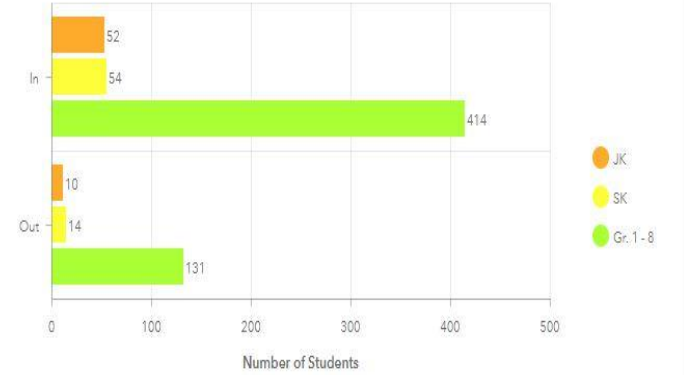
### Out of Boundary Students With & Without Siblings



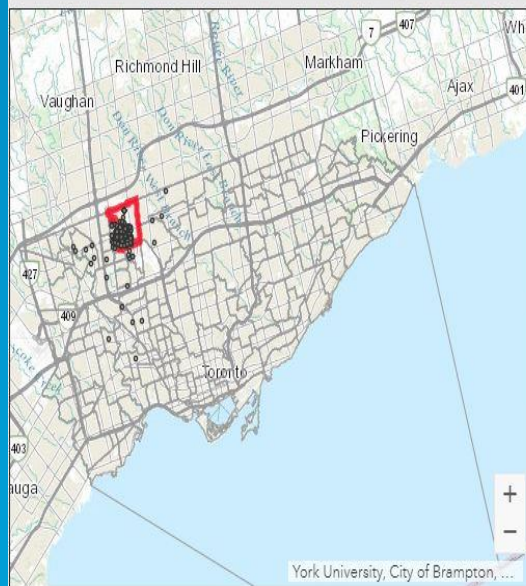
Last update: a few seconds ago



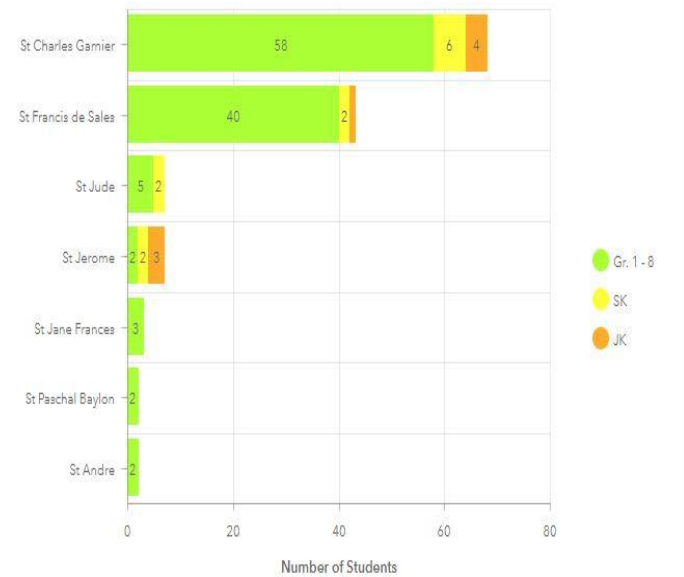
### Students Inside & Outside Boundary by Grade



Last update: a few seconds ago



### Number of Out-of-Boundary Students by Home School

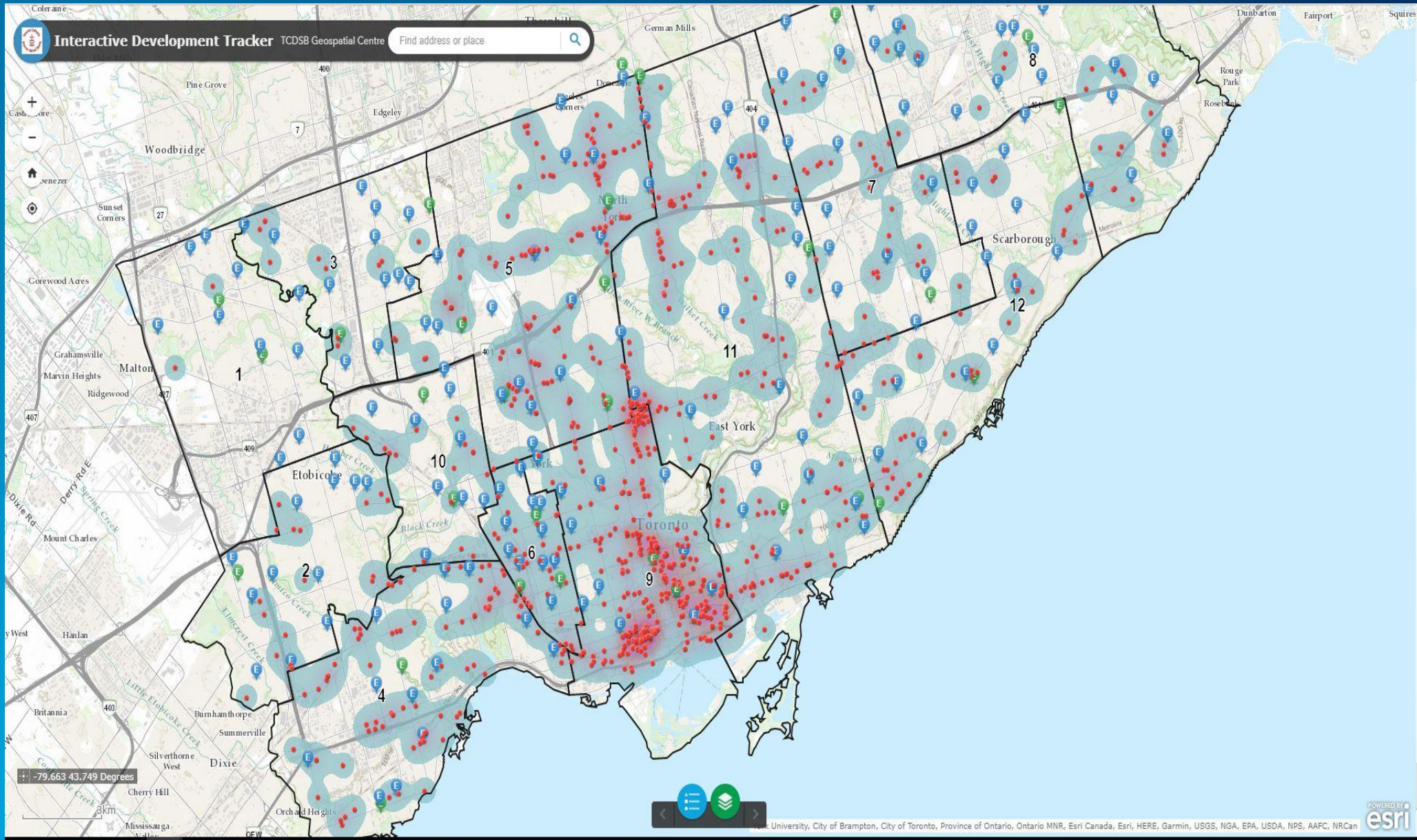


Last update: a few seconds ago

# Residential Developments

Interactive Development Tracker

# Current



# School Space Assessment

Room Use Dashboard

# Current

Room Use Dashboard  
Toronto Catholic District School Board

School: Chaminade Floor: 3

Showing 1

FloorPlanTest:

- TCSB Code 509
- Loading 0
- Room Use Art Rm
- # of Students 0
- Room Utilization 0
- Floor 3
- School Name Chaminade College
- Room # 314
- Sq. Ft 1524.35

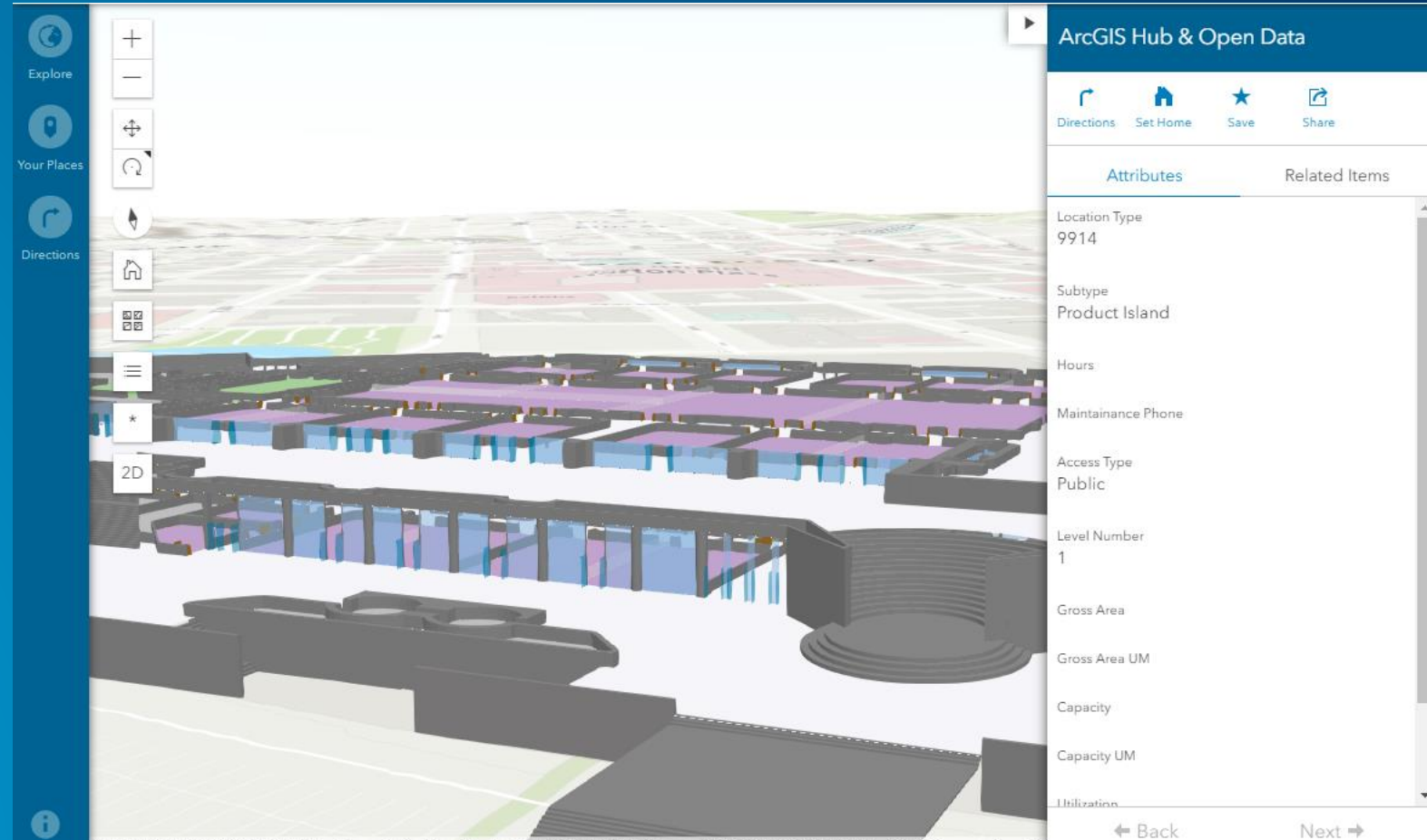
The image shows an aerial map of the Chaminade College campus. The building complex is labeled 'Chaminade'. A specific room, 314, is highlighted in orange. The map includes various building footprints, some labeled with numbers like 16, 14, 15, 13, 7, 5, 10, 8, 434, 436, 430, 428, 426, 68, 67, 65, 493, 495, 497, 499, 501, 503, 505, 507, 515, 517, 519, 196, 194, 502, 504, 506, 508, 510, 520, 524, 530, 214, 212, 210, 519, 517, 515, 507, 505, 503, 501, 499, 497, 495, 493, 67, 65, 68, 430, 428, 426, 434, 436, 5, 7, 8, 10, 12, 14, 15, 16. A street labeled 'VENICE DR' is visible on the left. The map also shows a road with a '125 m' marker and another with a '138 m' marker. The bottom right corner of the map contains the text: 'York University, City of Brampton, City of Toronto, Province of Ontario, Ontario MNR, Esri Canada, Esri, HERE, Garmin, INCREMENT P, USGS, ...'



# Future Projects

# Indoor Mapping

- AutoCAD to ArcGIS Link
- Room numbering and Cleaning
- Line of Site



# Drones

- Updated images of all our schools (2D and 3D)
- IR Sensor
- Site Assessment



# Contact Information

**Jonathan Howley**

**Senior Manager of Planning  
and Accountability**

**Email:**

**[jonathan.howley@tcdsb.org](mailto:jonathan.howley@tcdsb.org)**

**Phone: 416-222-8282 Ext. 2033**

**Spencer Comfort**

**Supervisor of Planning (GIS &  
Assessment)**

**Email:**

**[spencer.comfort@tcdsb.org](mailto:spencer.comfort@tcdsb.org)**

**Phone: 416-222-8282 Ext. 2432**

**Bunmi Kusimo**

**Supervisor of Planning (Space  
Assessment)**

**Email:**

**[bunmi.kusimo@tcdsb.org](mailto:bunmi.kusimo@tcdsb.org)**

**Phone: 416-222-8282 Ext. 2280**

**Khasim Martin**

**Planning/GIS Technician**

**Email:**

**[khasim.martin@tcdsb.org](mailto:khasim.martin@tcdsb.org)**

**Phone: 416-222-8282 Ext. 2281**

**QUESTIONS?**

# Session Rating

