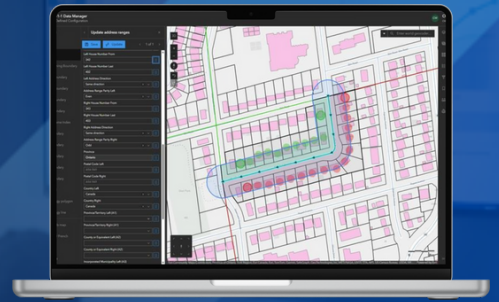




NG9-1-1 Data Manager



Simplify your **NG9-1-1 GIS data readiness** with a centralized, compliance-driven solution for managing civic addresses, response boundaries, and road centre lines.

THE CHALLENGE

Canada's transition to NG9-1-1 is redefining how emergency calls are routed – and complete, timely and accurate GIS data is essential to that transition. Municipalities must align their data with the NG9-1-1 GIS Data Model to ensure timely emergency response. But for many, managing compliant address, road, and boundary data across multiple systems remains a complex, resource-heavy challenge.

THE SOLUTION

NG9-1-1 Data Manager is a web-based solution that centralizes the creation, validation, and submission of NG9-1-1-compliant GIS data. It supports all required layers – civic addresses, road centre lines, and emergency boundaries – while ensuring alignment and compliance with published NG9-1-1 standards and Canadian requirements. By streamlining workflows, and improving data quality, it simplifies readiness and reduces risk as municipalities advance toward NG9-1-1 implementation.

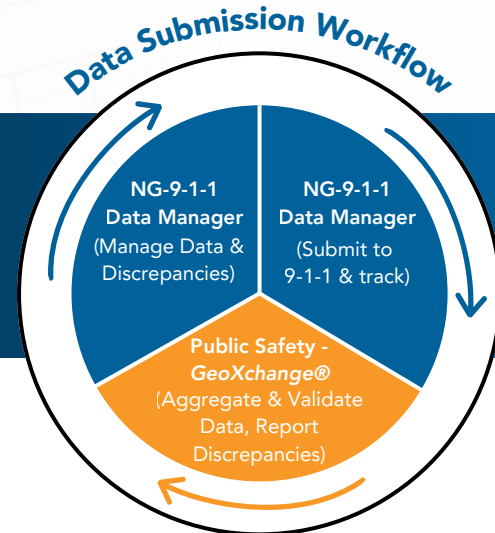
KEY BENEFITS

- Manage NG9-1-1 data with ease using web-based tools that ensure accuracy and efficiency
- Track the status of features from proposed to retirement within a centralized system
- Streamline data updates and reduce manual entry through enhanced editing workflows
- Submit and monitor GIS data to the NG9-1-1 GIS data aggregator with built-in tools
- Review, repair and resolve discrepancy reports issued by the NG9-1-1 GIS data aggregator
- Extend your data model to support both NG9-1-1 compliance and broader operational needs



Did you know...

NG9-1-1 Data Manager was built to support data submission workflows with the NG9-1-1 GIS data aggregator. Package and submit data to the NG9-1-1 GIS data aggregator, monitor the status of your submissions, and review discrepancy reports.



LEARN MORE, GET ANSWERS, AND CONNECT WITH OUR TEAM

Scan the QR code or visit esri.ca/NG911-data-manager

For direct inquiries or demo requests, email NGDataManager_Team@esri.ca